

spoing

Soil, 100% recycled PET



Soil natural 01



Soil ocre 23



Soil hazel 96



Soil indigo 90



Soil turquoise 44



Soil niagara 158



Soil lilac 70



Soil blush 92



Soil carmine 36



Soil eucalyptus 193



Soil army 14



Soil sage 203

Live life, love Spoinq

Article:	Soil (price category 1)
Width:	138 cm
Composition:	60% RPET, 40% PES
Light fastness:	4-5
Wear resistance:	100.000 cycles Martindale
Fire resistance:	BS 5852 (1979)
Cleaning:	Softly clean with damp cloth
Innovative textile from recycled plastic	



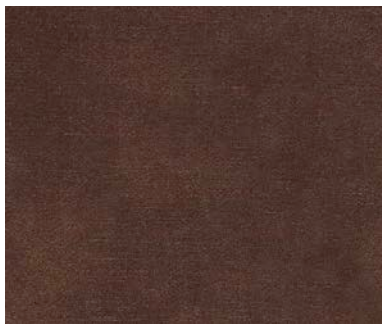
Adore ecru 102



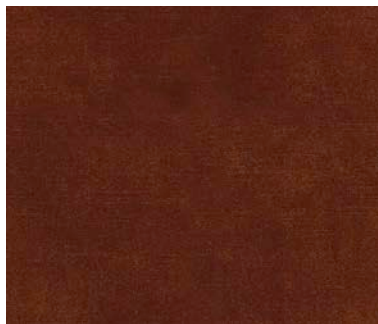
Adore beige 05



Adore liver 10



Adore coffee 81



Adore copper 126



Adore gold 132



Adore hunter 156



Adore steel 149



Adore petrol 56



Adore blossom 166



Adore blush 92



Adore pale 200

Live life, love Spoinq

Article:	Adore (price category 1)
Width:	138 cm
Composition:	100% PES
Light fastness:	Light: 5 Medium: 5 Dark: 4-5
Wear resistance:	88.000 cycles Martindale
Cleaning:	Softly clean with damp cloth

spinq

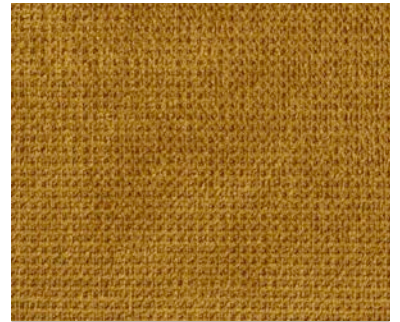
Regain, 100% recycled PET



Regain cream 02



Regain lightgrey 60



Regain ocre 23



Regain blush 92



Regain hazel 96



Regain scarlet 141



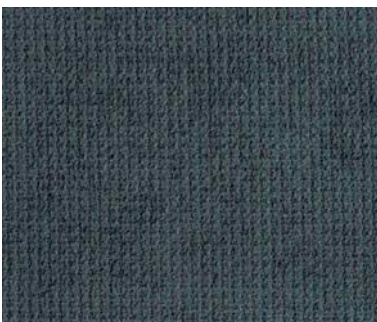
Regain taupe 12



Regain hunter 156



Regain eucalyptus 193



Regain indigo 90



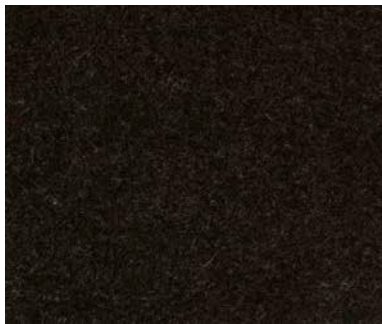
Regain niagara 158



Regain darkgrey 68

Live life, love Spoinq

Article:	Regain 100% recycled PET (price category 1)
Width:	138 cm
Composition:	100% RPET
Light fastness:	4-5
Wear resistance:	100.000 cycles Martindale
Fire resistance:	BS 5852 (1979)
Cleaning:	Softly clean with damp cloth
Innovative textile from recycled plastic	



Facet black 1003



Facet lightgrey 1000



Facet ashgrey 40



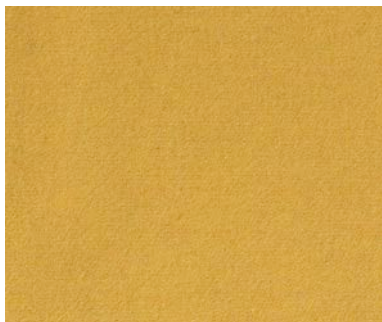
Facet natural 01



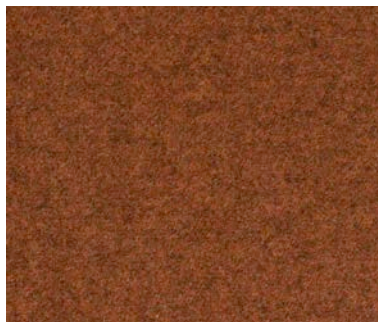
Facet kiezel 7



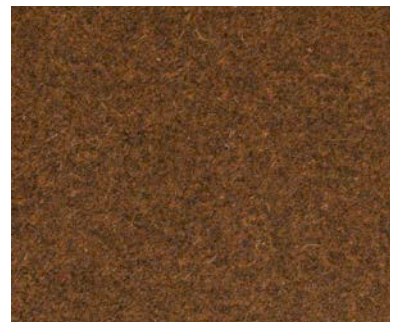
Facet shitake 124



Facet maize 22



Facet terra 31



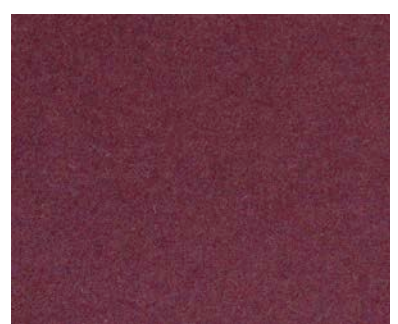
Facet rust 29



Facet blossom 166



Facet pink 73



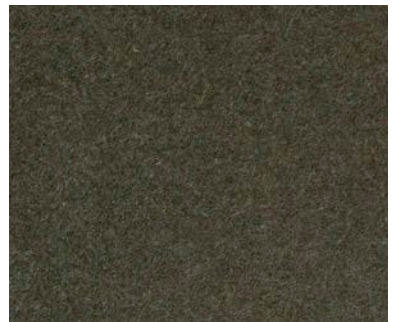
Facet aubergine 74



Facet olive 53



Facet pistachio 52



Facet army 14



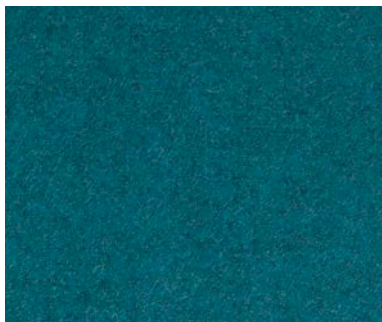
Facet mint 50



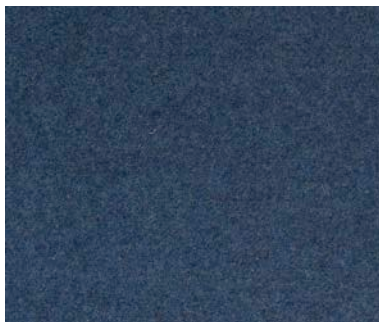
Facet lightblue 41



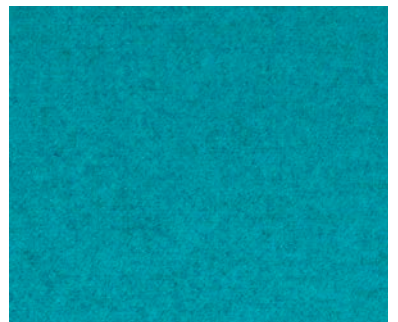
Facet azure 144



Facet petrol 56



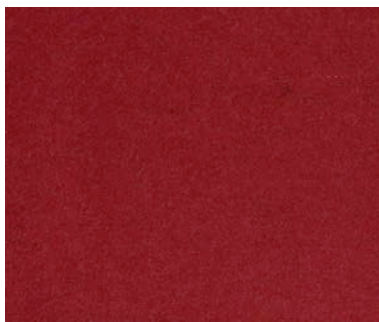
Facet blue 45



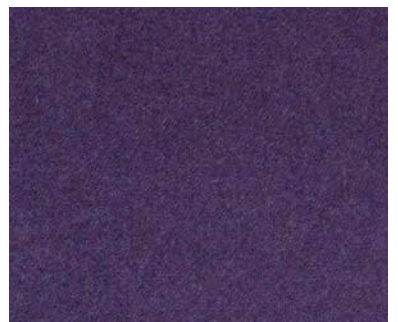
Facet oceanblue 147



Facet indigo 90



Facet red 2011



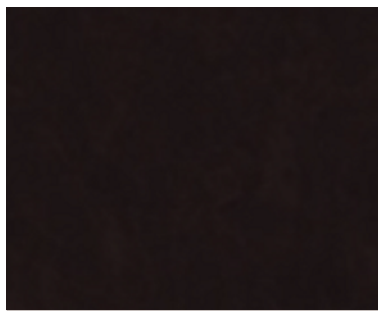
Facet violet 72

Live life, love Spoinq

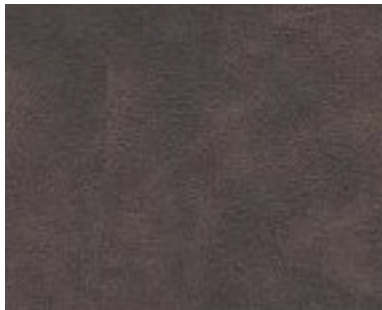
Article:	Facet (price category 1)
Width:	138 cm
Weight:	600 g/m
Composition:	70% Wool, 25% Polyamide, 5% OF
Light fastness:	4
Wear resistance:	40.000 cycles Martindale
Fire resistance:	EN 1021-1: 2006 PASS + EN 1021-2: 2006 PASS
Cleaning:	Softly clean with damp cloth



Vintage 127



Vintage 123 dark brown



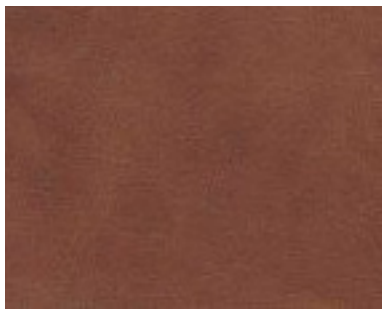
Vintage 12



Vintage 82



Vintage 10



Vintage 28



Vintage 29



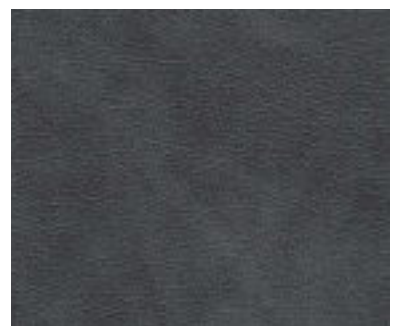
Vintage 40



Vintage 180



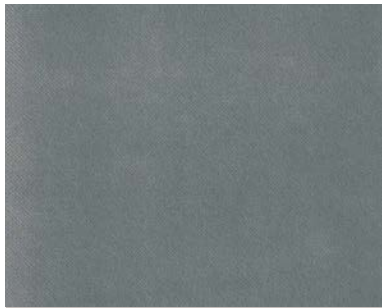
Vintage 67



Vintage 66

Live life, love Spoinq

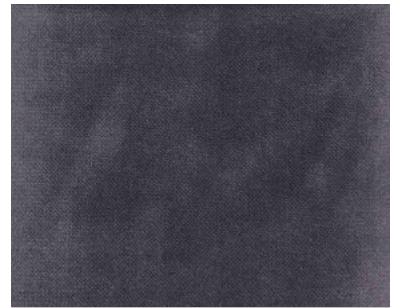
Article:	Vintage (imitation leather, price category 1)
Composition:	100% PU
Weight:	750 g/lm
Width:	138 cm
Wear resistance:	100.000 cycles Martindale
Light fastness:	Class 5
Cleaning:	<p>Contamination by oil, grease and ink must be removed immediately. Clean with warm, mild soap and a micro-fiber cloth or a soft hand brush. Do not use solvents, chlorine, abrasives, chemical cleaners and polishes. Please note that dues with jeans or other clothing are included.</p> <p>Colourshades may slightly vary.</p>



Juke steel 149



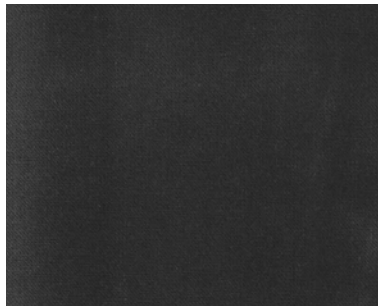
Juke grey 65



Juke anthracite 67



Juke hunter 156



Juke charcoal 79



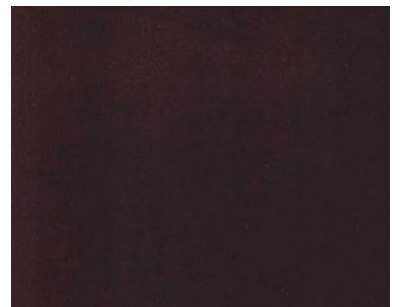
Juke onyx 169



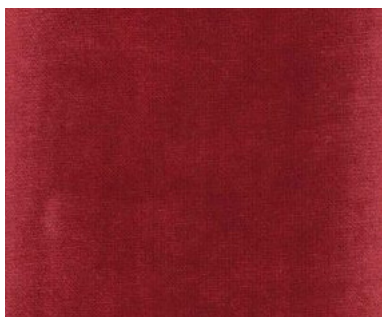
Juke pink 73



Juke magnolia 160



Juke winered 39



Juke red 35



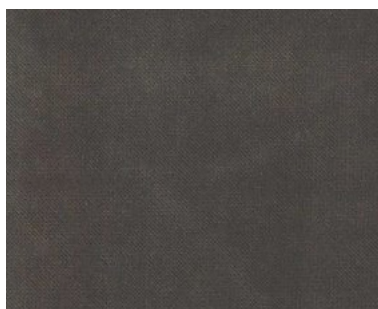
Juke bordeaux 37



Juke orange 25



Juke cream 02



Juke taupe 12



Juke espresso 123



Juke azure 144



Juke iceblue 43



Juke blue 45



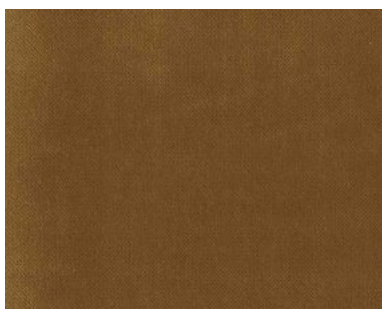
Juke pistachio 52



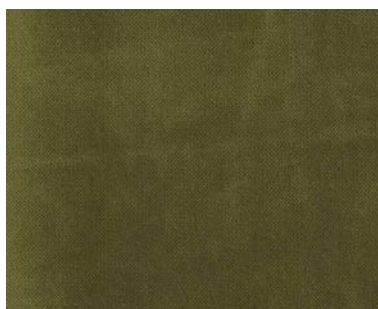
Juke lilac 70



Juke lavender 71



Juke gold 132



Juke olive 53



Juke forest 162

Live life, love Spoinq

Article:	Juke (price category 1)
Composition:	Faceside 100% PES, backing 90% PES, 10% Cotton
Weight:	560 g/lm
Width:	138 cm
Wear resistance:	100.000 cycles Martindale
Light fastness:	5
Fire resistance:	Passes BS 5852 (1979) : the cigarette test PASS
Cleaning:	Softly clean with damp cloth. Juke is a knitted fabric.



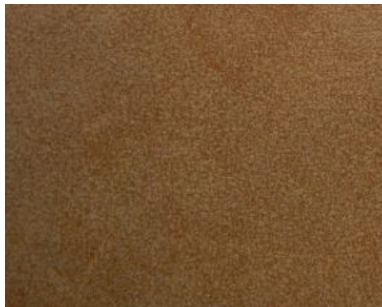
Oregon, 100% PU



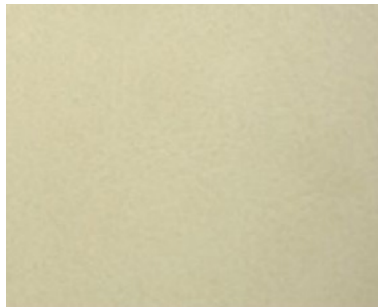
Oregon 315



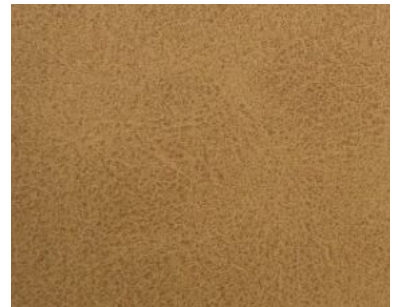
Oregon 307



Oregon 318



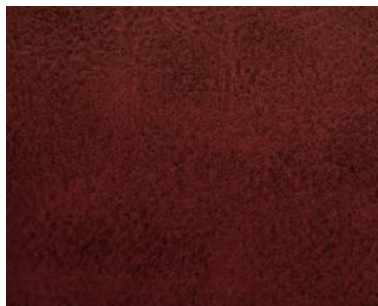
Oregon 303



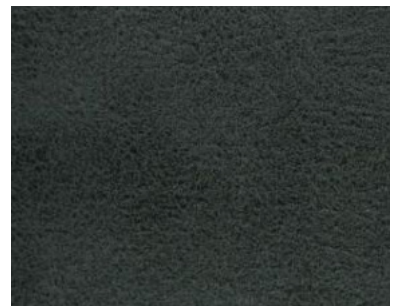
Oregon 304



Oregon 316



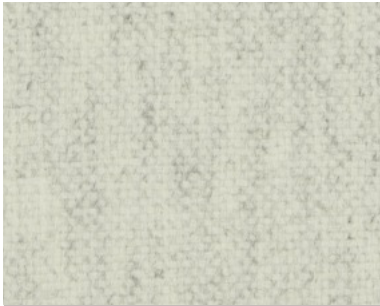
Oregon 325



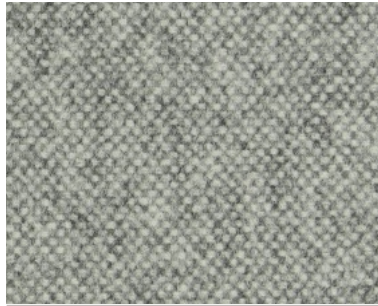
Oregon 390

Live life, love Spoinq

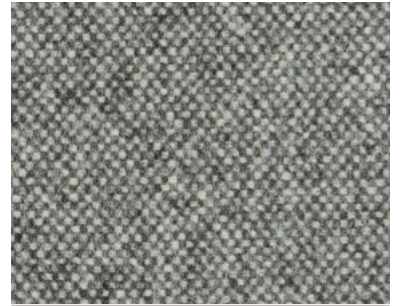
Article:	Oregon (price category 2)
Width:	140 cm
Composition:	100% PU, backing 33% CO, 67% PES
Flame retarded:	BS 5852 source 0+1 EN 1021 1+2
Wear resistance:	200.000 cycles Martindale
Light fastness:	4
Cleaning: Softly clean with damp cloth, water only!	



Highland 8



Highland 9



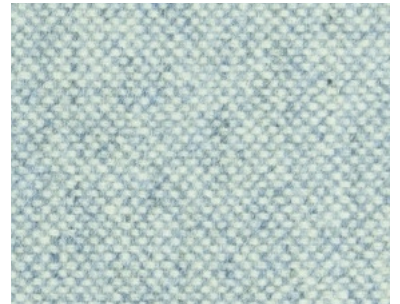
Highland 7



Highland 47



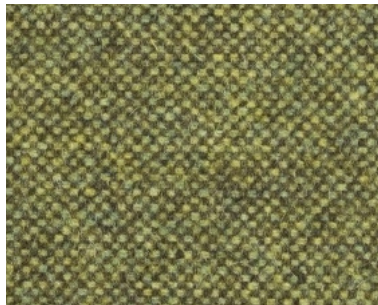
Highland 4



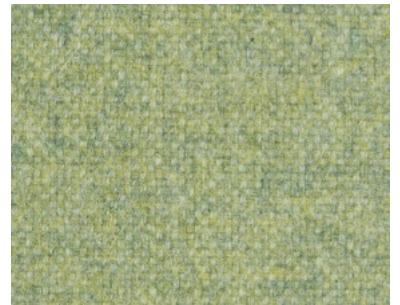
Highland 48



Highland 6



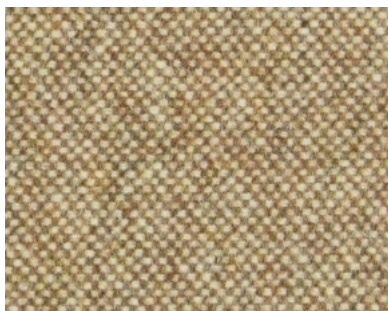
Highland 37



Highland 3



Highland 1



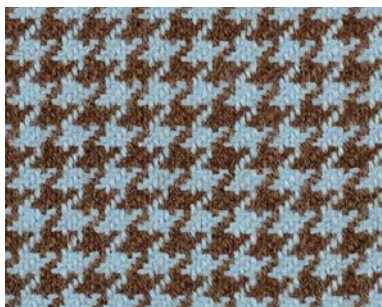
Highland 28



Highland 54

Live life, love Spoinq

Article:	Highland (price category 2)
Width:	140 cm
Composition:	100% wool
Weight:	485 g/m
Light fastness:	4-5
Wear resistance:	40.000 cycles Martindale
Fire resistance:	BS EN 1021 1&2
Cleaning:	Softly clean with damp cloth



CF 752/2323



CF 751/1228



CF 752/2727



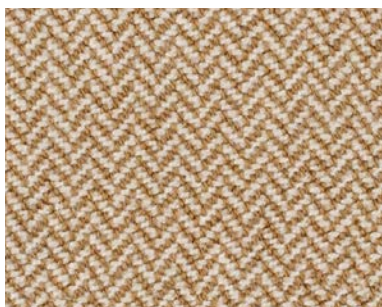
CF 751/1734



CF 752/1515



CF 751/1534



CF 751/0302



CF 752/3838



CF 752/0202



CF 752/0303



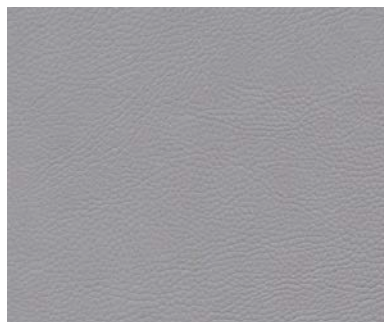
CF 752/0101



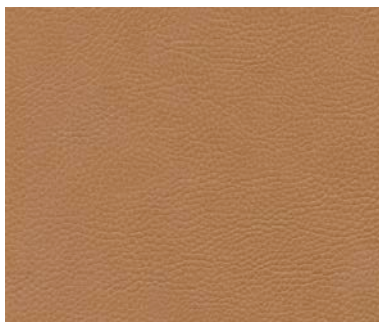
CF 751/0102

Live life, love Spoinq

Article:	Troon and Turnberry (price category 2)
Composition:	92% pure wool, 8% nylon
Weight:	500 g/lm, 357 g/m ²
Width:	140 cm
Wear resistance:	Turnberry (CF751): 80.000 cycles Martindale Troon (CF752): 60.000 cycles Martindale
Light fastness:	Colours comply with the requirements of BS EN ISO 105- B02:1999
Fire resistance:	Passes BS EN 1021 – 1 and 2:2006 (ignition sources 0 and 1), and BS5852:2006 (Section 4: ignition source 5). Also satisfies the requirements of BS7176:2007 (Medium Hazard category)
Cleaning:	Softly clean with damp cloth



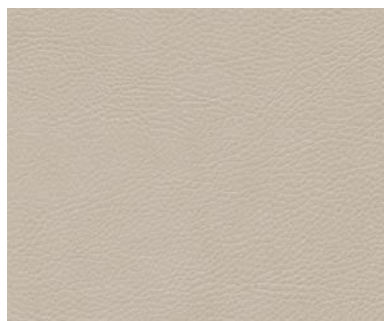
Sotega FLS 82



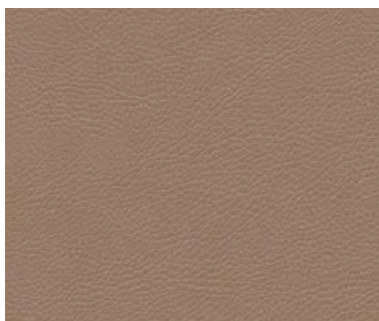
Sotega FLS 68



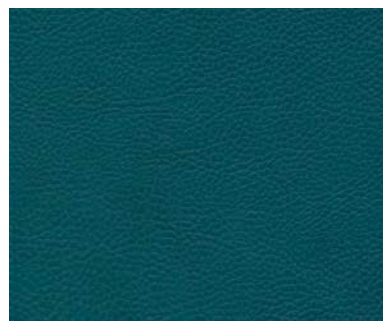
Sotega FLS 96



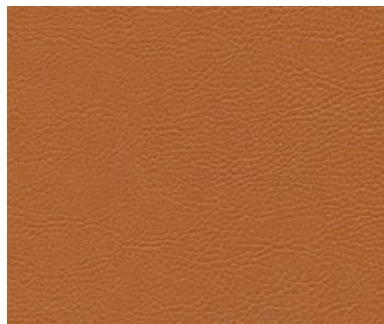
Sotega FLS 13



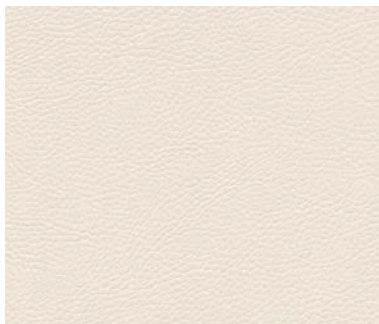
Sotega FLS 12



Sotega FLS 81



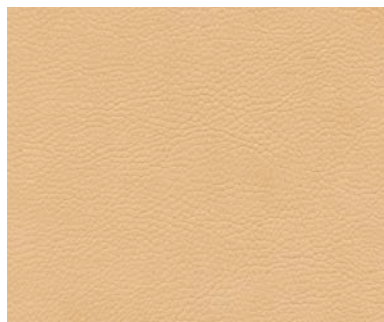
Sotega FLS 55



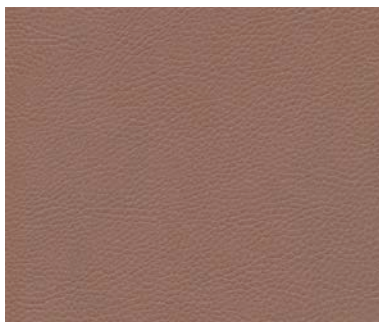
Sotega FLS 83



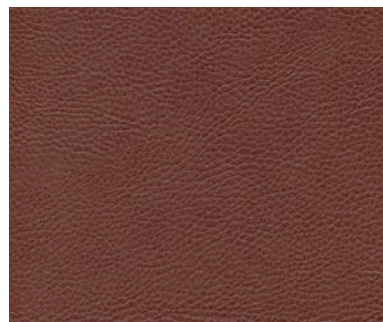
Sotega FLS 72



Sotega FLS 94



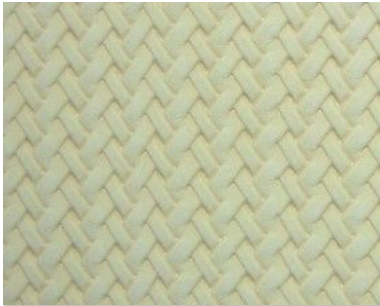
Sotega FLS 70



Sotega FLS 93

Live life, love Spoinq

Article:	Sotega FLS (price category 2)
Composition:	Ca. 2% PU-Finish, ca. 73% PVC-compound, ca. 25% CO-stof
Weight:	780 +/- 50 gr./m ²
Thickness:	1,7 +/- 0,2 mm
Wear resistance:	DIN EN ISO 5470-2: > 50.000 cycles Martindale
Cleaning:	Softly clean with damp cloth and mild soap. Do not use solvents, chlorides, abrasives or wax polishes.
Fr standards:	NF M2 BS 5852 part 0+1+5 EN 1021 part 1+2 DIN 4102 (Part1, B2) MVSS302 ÖNORM B3825 B1 ÖNORM A 3800-1 Q2



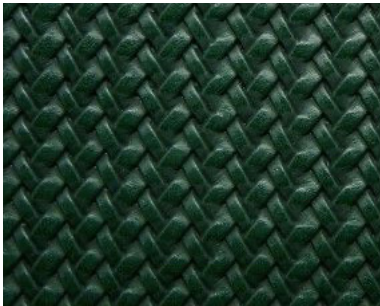
Wicker 01



Wicker 02



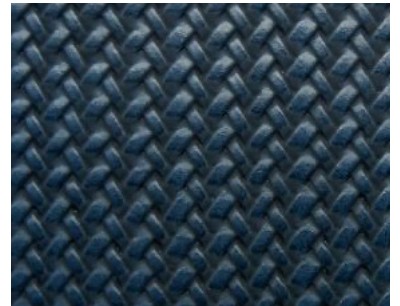
Wicker 05



Wicker 06



Wicker 07



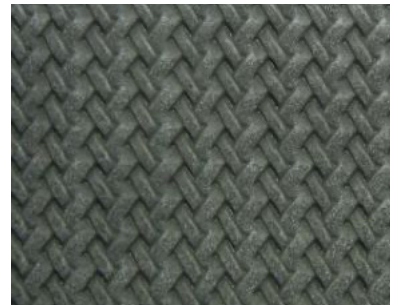
Wicker 15



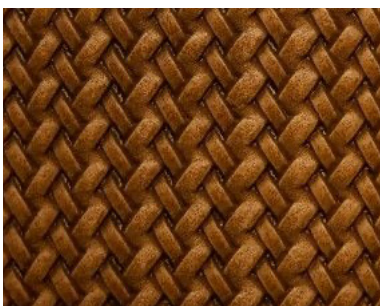
Wicker 11



Wicker 04



Wicker 13



Wicker 09



Wicker 08



Wicker 16

Live life, love Spoinq

Article:	Wicker (price category 2)
Width:	137 cm
Composition:	65%PVC, 35% PES
Flame retarded:	BS 5852 source 0+1
Wear resistance:	35.000 cycles Martindale
Light fastness:	6
Cleaning: Softly clean with damp cloth, water only!	



Tweed 1011



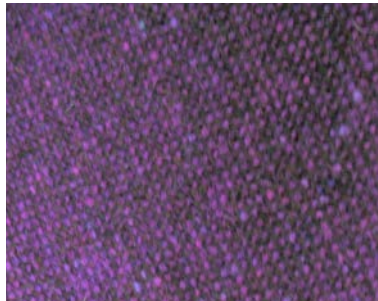
Tweed 3513



Tweed 1401



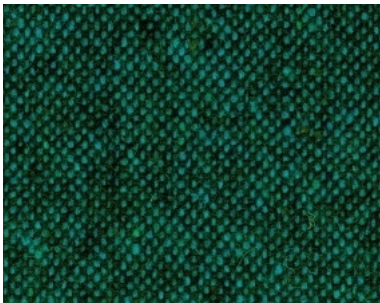
Tweed 1616



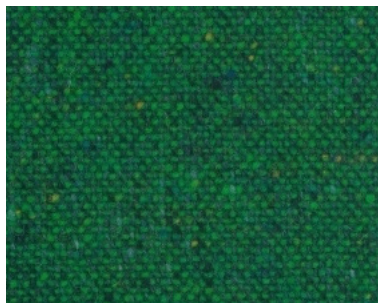
Tweed 3026



Tweed 0509



Tweed 3235



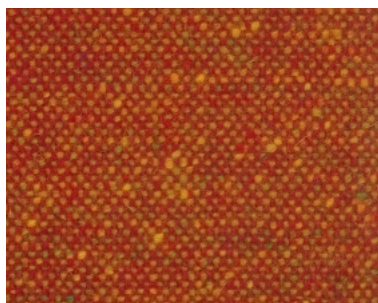
Tweed 0907



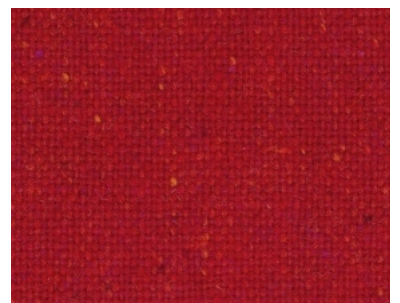
Tweed 3334



Tweed 3417



Tweed 0215



Tweed 2802

Live life, love Spoinq

Article:	Tweed (price category 3)
Width:	140 cm
Weight:	645 g/m, 460 g/m ²
Composition:	100% wool
Light fastness:	6
Wear resistance:	50.000 cycles Martindale
Fire resistance:	SS-EN 1021:1+2 BS 5852 Part 1 (sigarett + small fire)
Cleaning:	Softly clean with damp cloth



Botero Copper 7844-07



Habanera Copper 7841-03



Joropo Copper 7837-03



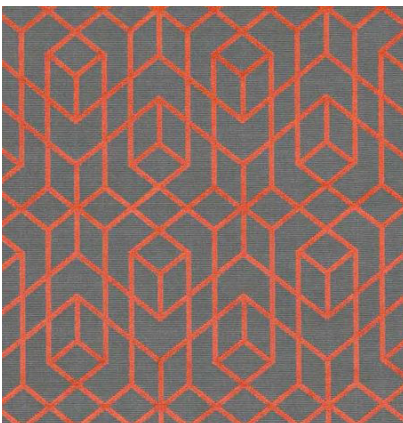
Botero Verde 7844-06



Habanera Verde 7841-02



Jorop Verde 7837-02



Botero Cayenne 7844-08



Habanera Chili 7841-05



Joropo Chili 7837-05

Live life, love Spoinq

Article:	Romo Botero 7844 (price category 4)
Width:	136 cm
Composition:	78% VI, 22% MA, Pile 100% VI
Fire resistance:	Passes BS 5852 part 1 and 2, cigarette test, EN1021 part 1 and 2
Wear resistance:	50.000 cycles Martindale

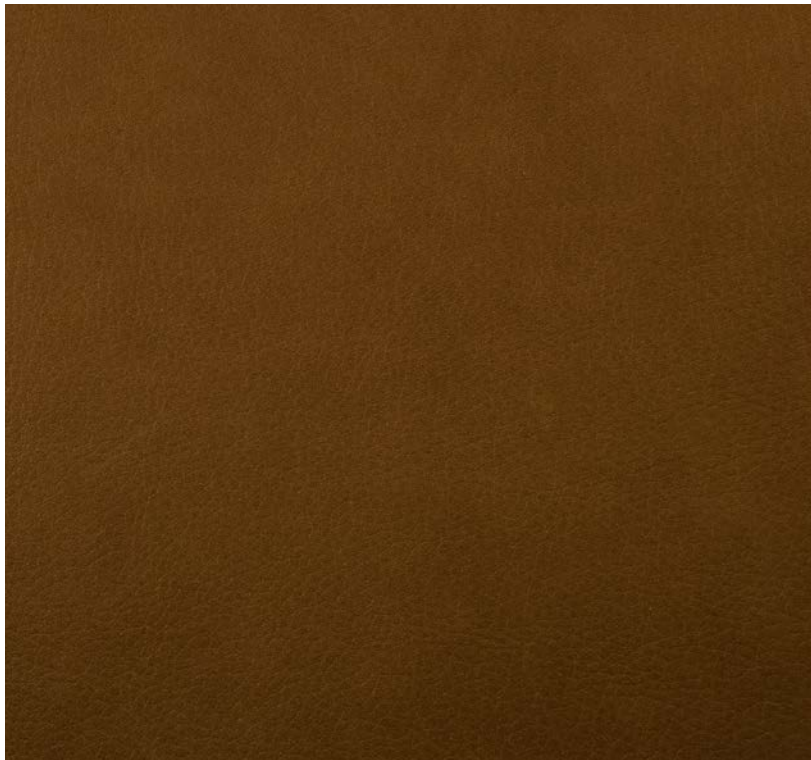
Article:	Romo Habanera 7841 (price category 3)
Width:	132cm
Composition:	95% TCS, 5% PA FR
Fire resistance:	Passes BS 5852 part 1 and 2, cigarette test, EN1021 part 1 and 2
Wear resistance:	40.000 cycles Martindale

Article:	Romo Joropo 7837 (price category 3)
Width:	140cm
Composition:	100% TCS
Fire resistance:	Passes BS 5852 part 1 and 2, cigarette test, EN1021 part 1 and 2
Wear resistance:	50.000 cycles Martindale

Cleaning: Softly clean with damp cloth.

spoinq

Gogain leather



Camel



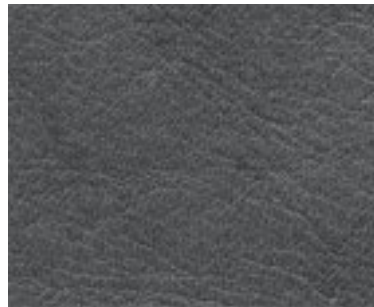
Cognac



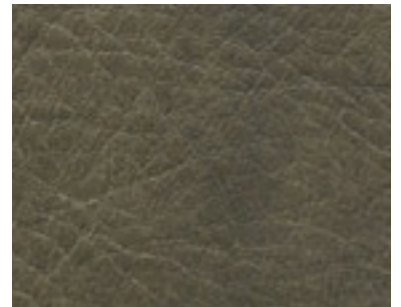
Bruciato



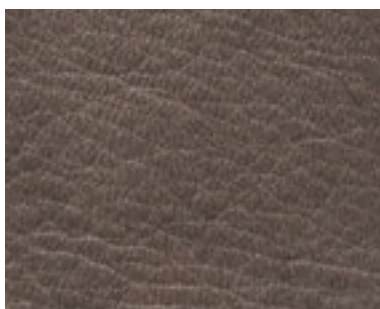
Tortora



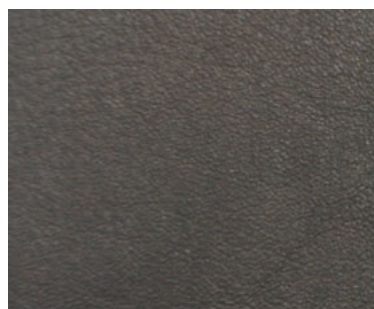
Fumo



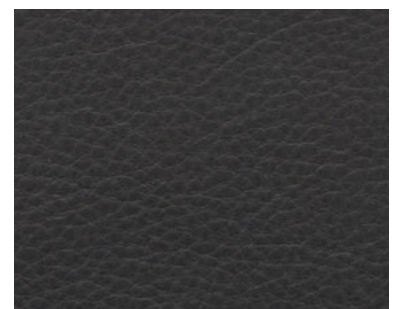
Bosco



Terra



Chocolate



Black

Live life, love Spoinq

Article:	Gogain (price category 5)
Hide size:	4.20 m ²
Thickness:	ca. 0.9 mm
Finish:	<p>Gogain is a full grain article with an aniline barrel, so rightfully a "pure aniline" for connoisseurs the only real leather. For Gogain New Zealand bulls are used with an average size of 4.75 m² and a thickness of 1.0 mm / 1.1 mm. Because of the complete open structure all-natural characteristics are and remain visible, these cannot be labelled as mistakes in any way, but are rather a sign of real leather. Because of the aniline barrel the Gogain gets its deep vivid colour, because of this colour differences can occur but also these belong to the charms of a pure aniline.</p>
Maintenance:	<p>If staining does occur, it is advisable to dab the stain with a soft, damp cloth. Optionally, a cleaning detergent can be used, providing that it is water based and contains no solvents or alcohol.</p>
Light fastness:	<p>The consequences of the aniline leather type is there no protective covering which makes it susceptible to discoloration by sunlight. It is therefore not recommended to place furniture upholstered with Gogain in direct sunlight. Due to the natural properties of leather colour variations between one dye lot and another may occur.</p>