

spoing

Soil
100% recycled PET



Soil natural 01



Soil ocre 23



Soil hazel 96



Soil indigo 90



Soil turquoise 44



Soil niagara 158



Soil lilac 70



Soil blush 92



Soil carmine 36



Soil eucalyptus 193



Soil army 14



Soil sage 203

Live life, love Spoinq

Article:	SOIL, innovative textile from recycled plastic
Width:	138 cm
Composition:	60% RPET, 40% PES
Light fastness:	4-5
Martindale:	100.000
Fire resistance:	BS 5852 (1979)
Cleaning:	Softly clean with damp cloth



Adore ecru 102



Adore beige 05



Adore liver 10



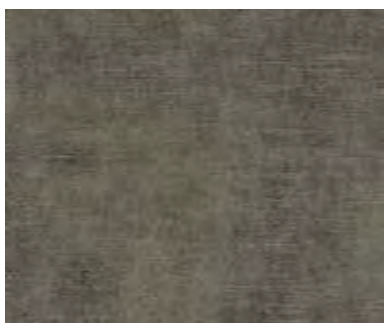
Adore coffee 81



Adore copper 126



Adore gold 132



Adore hunter 156



Adore steel 149



Adore petrol 56



Adore blossom 166



Adore blush 92



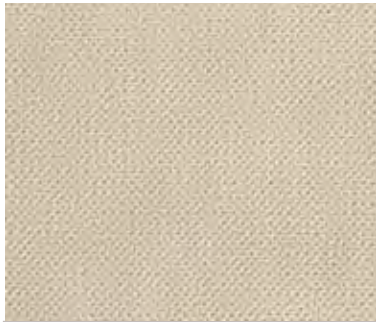
Adore pale 200

Live life, love Spoinq

Article:	ADORE
Width:	138 cm
Composition:	100% PES
Light fastness:	Light: 5 Medium: 5 Dark: 4-5
Martindale:	88.000
Cleaning:	Softly clean with damp cloth

spoing

Regain
100% recycled PET



Regain cream 02



Regain lightgrey 60



Regain ocre 23



Regain blush 92



Regain hazel 96



Regain scarlet 141



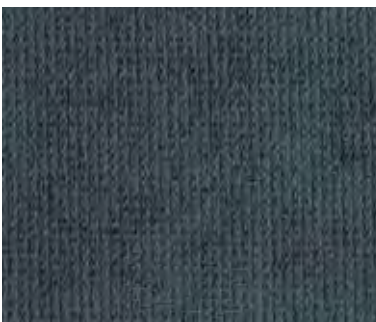
Regain taupe 12



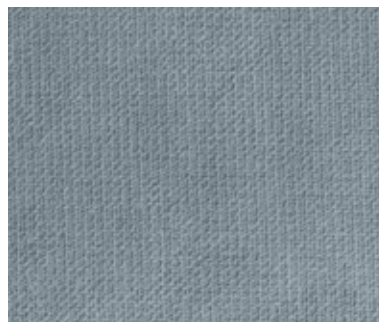
Regain hunter 156



Regain eucalyptus 193



Regain indigo 90



Regain niagara 158



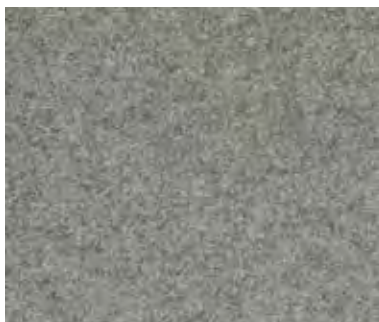
Regain darkgrey 68

Live life, love Spoinq

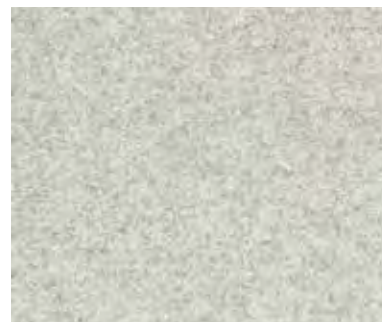
Article:	REGAIN, 100% recycled PET
Width:	138 cm
Composition:	100% RPET
Light fastness:	4-5
Martindale:	100.000
Fire resistance:	BS 5852 (1979)
Cleaning:	Softly clean with damp cloth



Facet black 1003



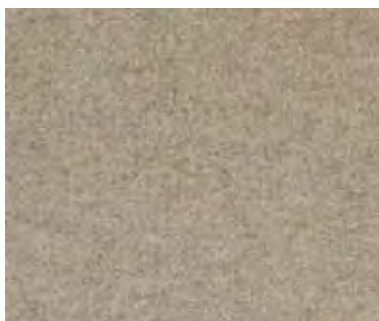
Facet lightgrey 1000



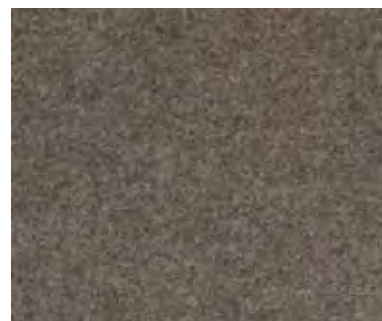
Facet ashgrey 40



Facet natural 01



Facet kiezel 7



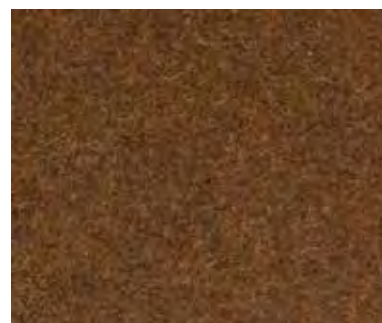
Facet shitake 124



Facet maize 22



Facet terra 31



Facet rust 29



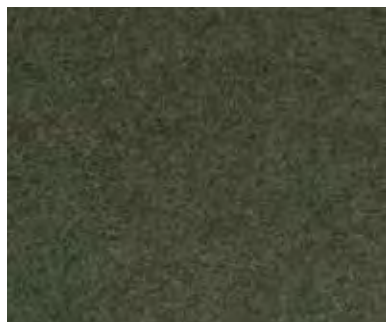
Facet blossom 166



Facet pink 73



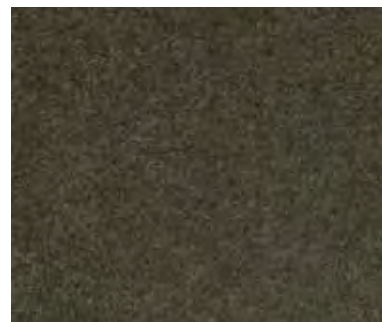
Facet aubergine 74



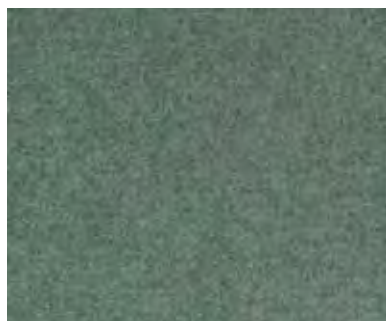
Facet olive 53



Facet pistachio 52



Facet army 14



Facet mint 50



Facet lightblue 41



Facet azure 144



Facet petrol 56



Facet blue 45



Facet oceanblue 147



Facet indigo 90



Facet red 2011



Facet violet 72

Live life, love Spoinq

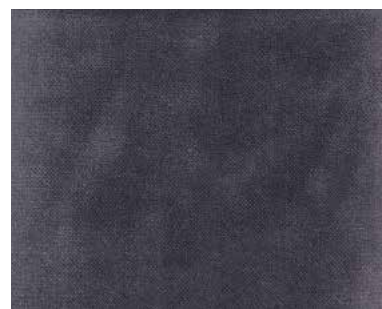
Article:	FACET
Width:	138 cm
Weight:	600 g/m
Composition:	70% Wool, 25% Polyamide, 5% OF
Light fastness:	4
Martindale:	40.000
Fire resistance:	EN 1021-1: 2006 PASS + EN 1021-2: 2006 PASS
Cleaning:	Softly clean with damp cloth



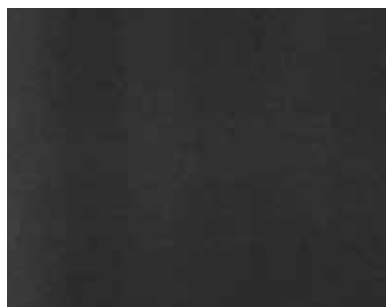
Juke steel 149



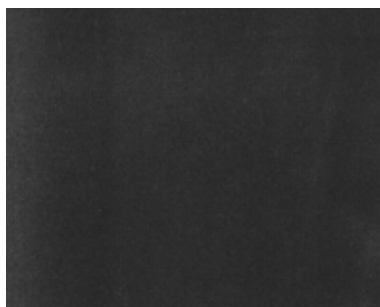
Juke grey 65



Juke anthracite 67



Juke hunter 156



Juke charcoal 79



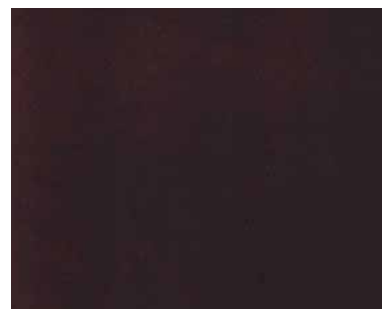
Juke onyx 169



Juke pink 73



Juke magnolia 160



Juke winered 39



Juke red 35



Juke bordeaux 37



Juke orange 25



Juke cream 02



Juke taupe 12



Juke espresso 123



Juke azure 144



Juke iceblue 43



Juke blue 45



Juke pistachio 52



Juke lilac 70



Juke lavender 71



Juke gold 132



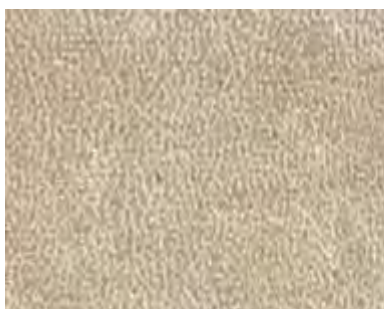
Juke olive 53



Juke forest 162

Live life, love Spoinq

Article:	JUKE
Composition:	Faceside 100% PES, backing 90% PES, 10% Cotton
Weight:	560 g/lm
Width:	138 cm
Martindale:	100.000
Light fastness:	5
Fire resistance:	Passes BS 5852 (1979) : the cigarette test PASS
Cleaning:	Softly clean with damp cloth. Juke is a knitted fabric.



Beige 05



Onyx 169



Dark Brown 18



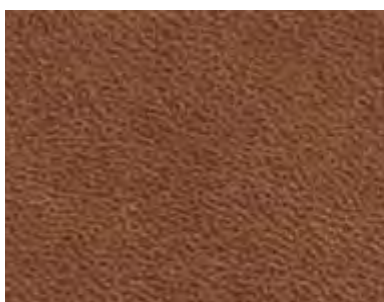
Wood 18



Brown 15



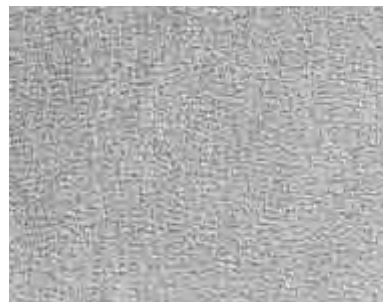
Liver 10



Cognac 28



Camel 09



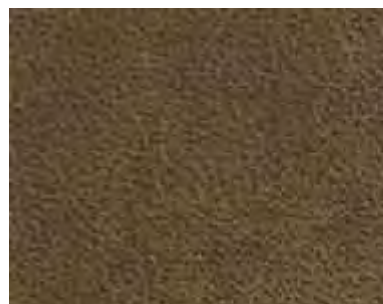
Light grey 60



Grey 65



Hunter 156



Moss 59

Live life, love Spoinq

Article:	BULL with recycled leather
Composition:	96% PES, 4% PU
Backing:	100% recycled leather fibres
Martindale:	32.000
Width:	138cm
Pilling:	Grade 3-4
Color fastness to light:	Grade 3-4

Maintenance: Dry clean only, we recommend that only companies experienced in the cleaning of furnishing fabrics are used.

spoing

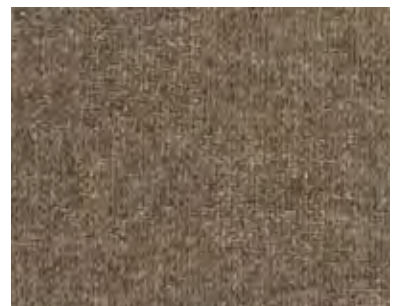
Forward, sustainable



Graphite 66



Beige 05



Mocca 13



Espresso 123



Hunter 156



Royal Blue 47



Mint 50



Pistachio 52



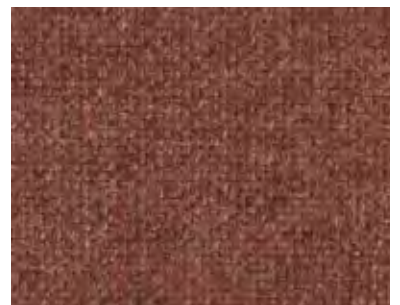
Mustard 06



Rust 29



Burgundy 34



Carmine 36

Live life, love Spoinq

Article: FORWARD, a luxury woven and sustainable fabric

Composition and 20% recycled polyamide 50% post-consumer wool, 30% virgin linen

Martindale: 60.000

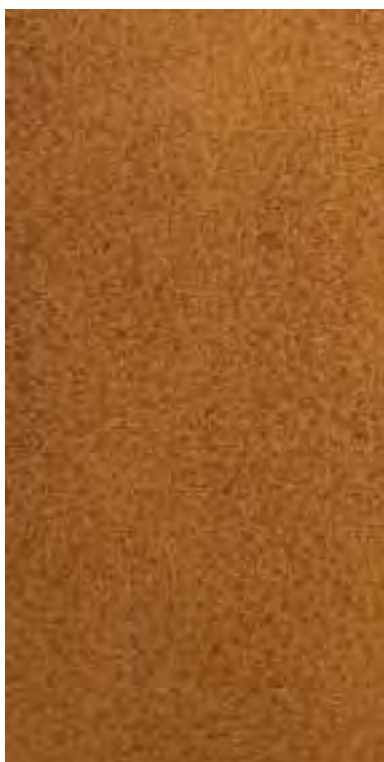
Width: 140cm

Pilling: Grade 3-4

Color fastness to light: Grade 4-5

Maintenance: Dry clean only, we recommend that only companies experienced in the cleaning of furnishing fabrics are used.

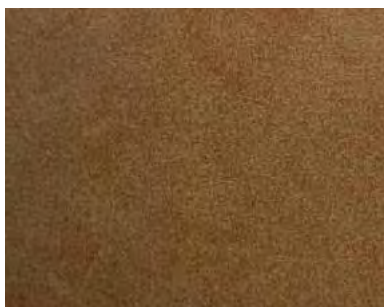
only available for benches!



Oregon 315



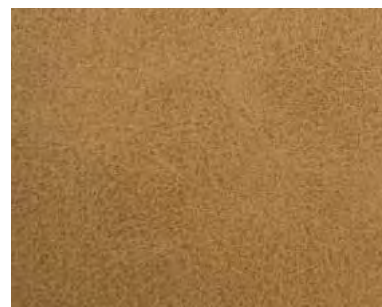
Oregon 307



Oregon 318



Oregon 303



Oregon 304



Oregon 316



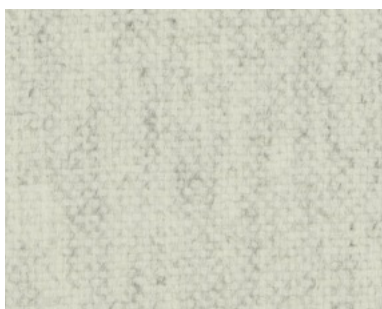
Oregon 325



Oregon 390

Live life, love Spoinq

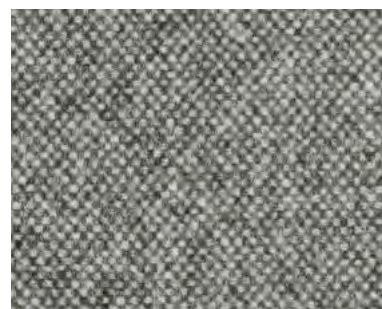
Article:	OREGON only available for benches!
Width:	140 cm
Composition:	100% PU, backing 33% CO, 67% PES
Flame retarded:	BS 5852 source 0+1 EN 1021 1+2
Martindale:	200.000
Light fastness:	4
Cleaning:	Softly clean with damp cloth, water only!



Highland 8



Highland 9



Highland 7



Highland 47



Highland 4



Highland 48



Highland 6



Highland 37



Highland 3



Highland 1



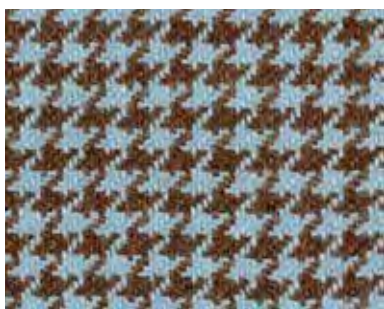
Highland 28



Highland 54

Live life, love Spoinq

Article:	HIGHLAND
Width:	140 cm
Composition:	100% wool
Weight:	485 g/m
Light fastness:	4-5
Martindale:	40.000
Fire resistance:	BS EN 1021 1&2
Cleaning:	Softly clean with damp cloth



CF 752/2323



CF 751/1228



CF 752/2727



CF 752/0303



CF 752/1515



CF 751/1534



CF 752/0101



CF 752/3838



CF 752/0202



CF 751/0102

Live life, love Spoinq

Article:	TROON AND TURNBERRY
Composition:	92% pure wool, 8% nylon
Weight:	500 g/lm, 357 g/m ²
Width:	140 cm
Martindale:	Turnberry (CF751): 80.000 Troon (CF752): 60.000
Light fastness:	Colours comply with the requirements of BS EN ISO 105- B02:1999
Fire resistance:	Passes BS EN 1021 – 1 and 2:2006 (ignition sources 0 and 1), and BS5852:2006 (Section 4: ignition source 5). Also satisfies the requirements of BS7176:2007 (Medium Hazard category)
Cleaning:	Softly clean with damp cloth



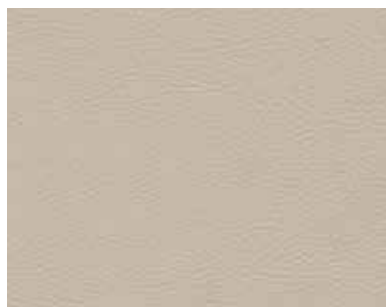
Sotega FLS 82



Sotega FLS 68



Sotega FLS 96



Sotega FLS 13



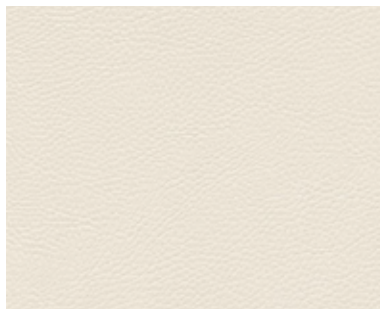
Sotega FLS 12



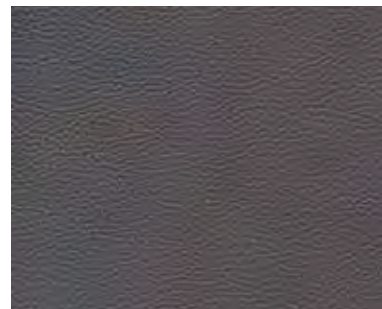
Sotega FLS 81



Sotega FLS 55



Sotega FLS 83



Sotega FLS 72



Sotega FLS 94



Sotega FLS 70



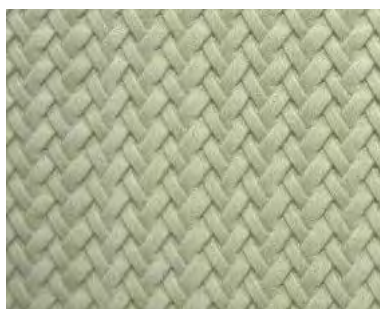
Sotega FLS 93

Live life, love Spoinq

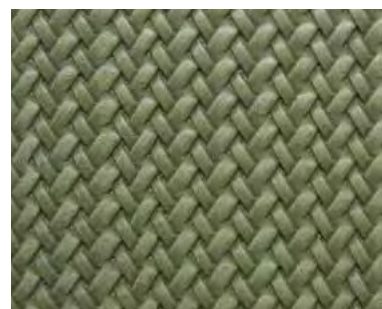
Article:	SOTEGA FLS
Composition:	Ca. 2% PU-Finish, ca. 73% PVC-compound, ca. 25% CO-stof
Weight:	780 +/- 50 gr./m ²
Thickness:	1,7 +/- 0,2 mm
Martindale:	DIN EN ISO 5470-2: > 50.000
Cleaning:	Softly clean with damp cloth and mild soap. Do not use solvents, chlorides, abrasives or wax polishes.
Fr standards:	NF M2 BS 5852 part 0+1+5 EN 1021 part 1+2 DIN 4102 (Part1, B2) MVSS302 ÖNORM B3825 B1 ÖNORM A 3800-1 Q2



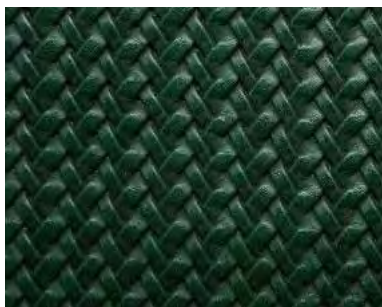
Wicker 01



Wicker 02



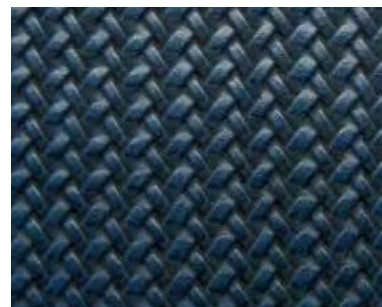
Wicker 05



Wicker 06



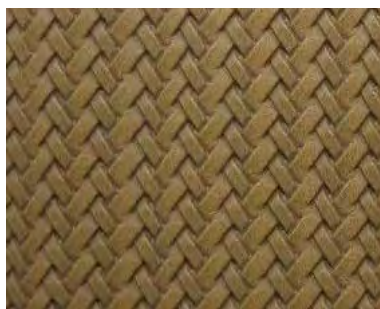
Wicker 07



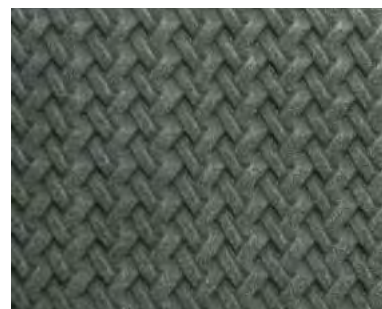
Wicker 15



Wicker 11



Wicker 04



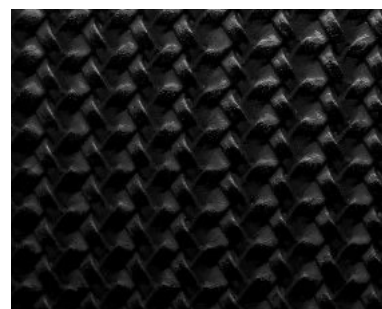
Wicker 13



Wicker 09



Wicker 08



Wicker 16

Live life, love Spoinq

Article:	WICKER
Width:	137 cm
Composition:	65%PVC, 35% PES
Flame retarded:	BS 5852 source 0+1
Martindale:	35.000
Light fastness:	6
Cleaning:	Softly clean with damp cloth, water only!



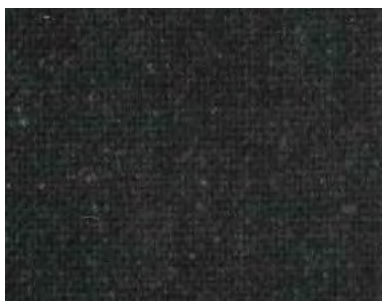
Tweed 1011



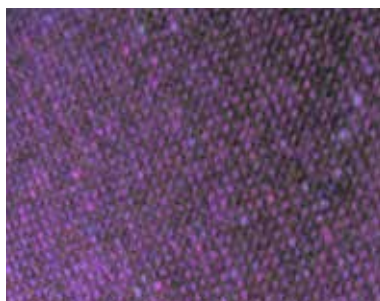
Tweed 3513



Tweed 1401



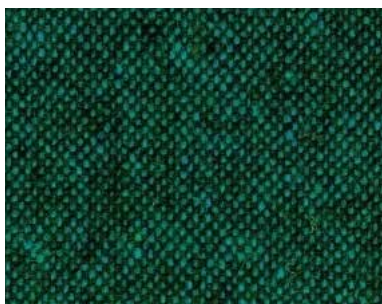
Tweed 1616



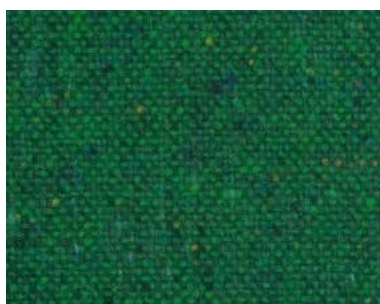
Tweed 3026



Tweed 0509



Tweed 3235



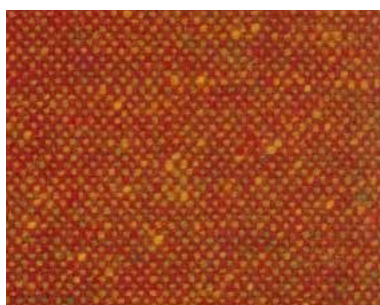
Tweed 0907



Tweed 3334



Tweed 3417



Tweed 0215



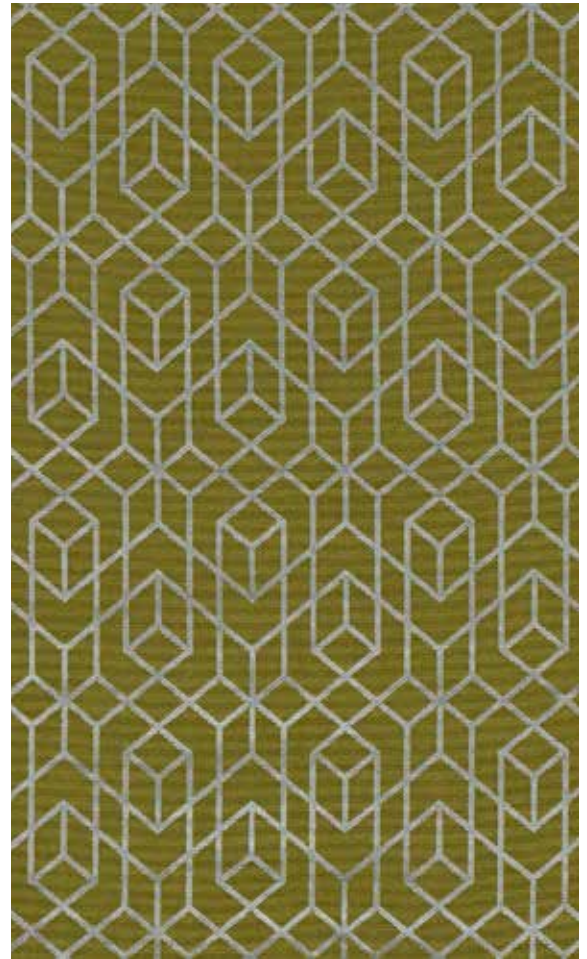
Tweed 2802

Live life, love Spoinq

Article:	TWEED
Width:	140 cm
Weight:	645 g/m, 460 g/m ²
Composition:	100% wool
Light fastness:	6
Martindale:	50.000
Fire resistance:	SS-EN 1021:1+2 BS 5852 Part 1 (sigarett + small fire)
Cleaning:	Softly clean with damp cloth



Botero Copper 7844-07



Botero Verde 7844-06



Botero Cayenne 7844-08



Habanera Copper 7841-03



Habanera Verde 7841-02

Live life, love Spoinq

Article: ROMO BOTERO 7844

Width: 136 cm

Composition: 78% VI, 22% MA, Pile 100% VI

Fire resistance: Passes BS 5852 part 1 and 2, cigarette test, EN1021 part 1 and 2

Martindale: 50.000

Article: ROMO HABANERA 7841

Width: 132cm

Composition: 95% TCS, 5% PA FR

Fire resistance: Passes BS 5852 part 1 and 2, cigarette test, EN1021 part 1 and 2

Martindale: 40.000

Cleaning: Dry clean only, we recommend that only companies experienced in the cleaning of furnishing fabrics are used.



K5287-11 Cream



K5287-13 Clay



K5287-16 Sienna



K5287-23 Monochrome



K5287-15 Cinnamon



K5287-20 Ocre



K5287-03 Cedar



K5287-04 Aquamarine



K5287-05 Flare



K5287-18 Battery



K5287-06 Dragonfly



K5287-02 Ignite

Live life, love Spoinq

Article:	SPIRAL recycled PL-CO
Composition:	55% Recycled Polyester, 45% Recycled cotton
Light fastness:	6
Martindale:	100.000
Width:	140cm
Cleaning:	Dry clean only, we recommend that only companies experienced in the cleaning of furnishing fabrics are used.



K5099-13 Piccadilly Petrol



K5217-05 Metropolitan Petrol



K5099-09 Piccadilly Biscuit



K5217-01 Metropolitan Biscuit



K5099-11 Piccadilly Burnt Orange



K5217-04 Metropolitan Burnt Orange

Live life, love Spoinq

Article: PICCADILLY

Width: 140 cm

Composition: 59% VI, 23% PL, 18% CO

Fire resistance: Passes BS 5852 part 1 and 2, cigarette test, EN1021 part 1 and 2

Martindale: 30.000

Usage: When used for upholstery within the UK, these fabrics must be used with a fire retardent interliner.
For France: Piccadilly FR crib 5.

Article: METROPOLITAN

Width: 140 cm

Composition: 60% VI, 16% PL, 24% CO

Fire resistance: Passes BS 5852 part 1 and 2, cigarette test, EN1021

Martindale: 40.000

Usage: When used for upholstery within the UK, these fabrics must be used with a fire retardent interliner.
For France: Metropolitan FR crib 5.

Cleaning: Dry clean only, we recommend that only companies experienced in the cleaning of furnishing fabrics are used.



Camel



Cognac



Bruciato



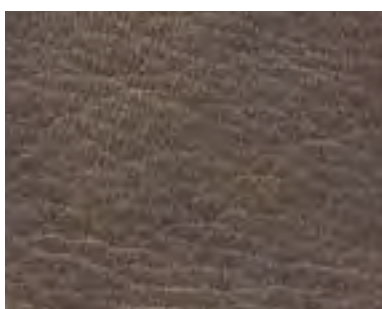
Tortora



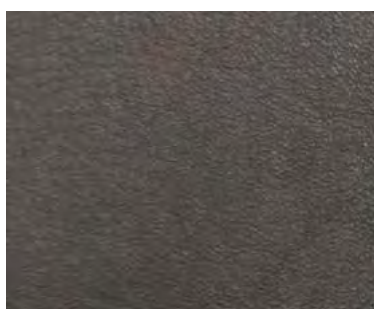
Fumo



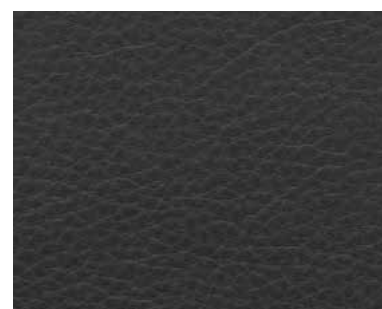
Bosco



Terra



Chocolate



Black

Live life, love Spoinq

Article: GOGAIN leather

Hide size: 4.20

Thickness: ca. 0.9mm

Martindale: 100.000

Light fastness: Susceptible to discoloration by sunlight

Cleaning: Dab stain with dry paper. We recommend only companies experienced in the cleaning of leathers are used.